

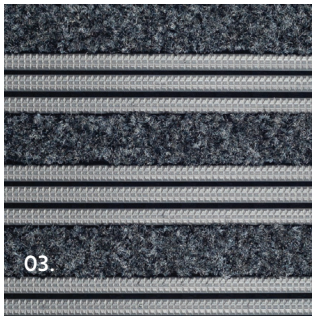
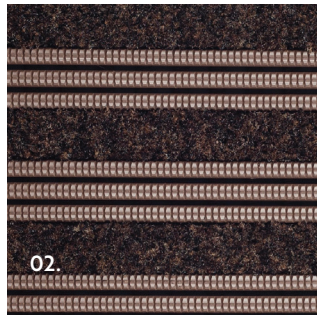
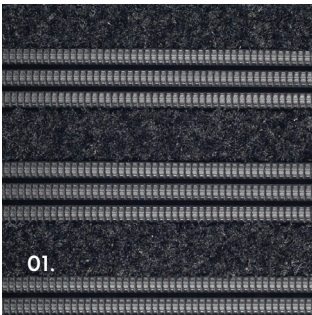
# Frontrunner Plus

Regular (5/8") & LP (1/2")

*The special close-space design of the open grid bars allow the product to be heel-proof and suitable for wheel chairs, shopping trolleys and other wheeled traffic.*

Frontrunner is made from a hard-wearing, flexible PVC and supplied in rolls so that large areas can be conveniently covered by one piece of flooring. Modules can additionally be supplied with sub-dividing panels created by the use of joining strip-enabling extensions. This allows sections to be easily removed for periodic high pressure cleaning and other specialist cleaning such as the removal of chewing gum.

- Frontrunner Plus is made from a hard-wearing, flexible PVC
- Wheeled-traffic friendly including shopping trolleys
- Open grid design lets debris fall through



01. Black with Smoke 608 Carpet  
03. Grey LP with Steel Grey 606 Carpet

02. Brown LP with Coffee Bean 605 Carpet



**portico**  
SYSTEMS

Flooring Solutions that Simplify.  
1+ 877 285 8899 • [www.porticosystems.com](http://www.porticosystems.com)



Grid Matting

Frontrunner Plus

# Frontrunner Plus

## Regular & LP



### > GRID MATTING SYSTEMS

#### SUGGESTED USES

Indoor entryways or other high-traffic areas. Ideal for vestibules.

#### SPECIFICATIONS

Grid Composition:	Flexible PVC
Overall Thicknesses:	Regular: 0.625" (16mm) LP: 0.50" (12mm)
Grid Thicknesses:	Regular: 0.563" (14mm) LP: 0.375" (10.5mm)
Carpet Pile Height:	0.27"   7mm
Carpet Pile Weight:	24.2 oz/sy
Total Carpet Weight:	126 oz/sy
Roll Widths:	4' only
Roll Lengths:	33' (standard)
Thermal Ratings:	≥ -23°C, ≤ +60°C
LEED-NC	MR Credit 4   IEQ Credit 5

#### LIMITED WARRANTY

2 years - Ask for warranty sheet for details

#### TECHNICAL SPECIFICATIONS (GRID)

Friction(ASTM C1028):	Wet .54   Dry .66	DIN 51130: R11, V10
Fire Resistance (ASTM E648):		Class 1
Abrasion (ASTM D3884):		0.4%/ 1,000 cycles
UV Resistance:	DELTA E 1.02 (Uncolored Material)	
Flame Retardant Grade (EN ISO 13501-1:2007-Cfl)		SI
Abrasion (ASTM D3884)		0.4%/ 1,000 cycles

#### TECHNICAL SPECIFICATIONS (CARPET)

Fiber	100% BCF Nylon (Tufted)
Backing	Colback non-woven polyester (Primary) Comfort vinyl (Secondary)
Carpet Attachment Method	Ultrasonic Welded
Electrostatic Propensity (DIN EN 1815)	> 2kV
Smoke Density (ASTM E662-13)	Passes
Surface Flammability (FF 1-70/ASTM D2859)	Passes

#### ENVIRONMENT

Portico Systems does not use any substances currently included in the SVHC (Substances of Very High Concern) list under REACH (Registration, Evaluation, Authorization and Restriction of Chemical substances) in any matting products. All PVC grid products are 100% recyclable.

#### THERMAL

Functional -23C +60C (slight size variation may occur at temperature extremes).

#### MAINTENANCE

Daily: Vacuum with an industrial cleaner. Should stones, salt particles or other solid matter become embedded between the surface ribs, remove using a blunt instrument (screwdriver) or similar device. In addition to daily routine above, its important to remove chewing gum deposits and stains as they appear.

Weekly: Complete daily cleaning routine, then clean top surface using cylindrical brush machine. Initiating: If a cylindrical brush machine is not available equally good results can be achieved using a high-pressure water extraction process.

Recessed Well Cleaning (as needed): Carefully lift and remove each section of grid matting one at a time. Once all of the Frontrunner sections have been removed vacuum/sweep the recess thoroughly, ensuring to pick up all stones or grit particles. Replace the matting sections as originally laid working from the edges to the center of the installation. When installing the sections at the edge of the frame, be sure to slide them under the frame lips.

#### INSTALLATION

Preparation: Ensure recessed well is at a depth of 10mm from the finished floor level. It should have a level and sound base, free from any obstructions. Before commencing installation, visually check the recess and remove any lumps or ridges in the base that may be present. Vacuum and/or sweep recess.

It is recommended that the entrance flooring system be installed as one of the final jobs to avoid damage associated with general building works. Unpack and inspect all materials to ensure they are free from transport damage. Check all components and tools required are available. Unroll/unpack the sections of matting and lay in a clean dry protected area to acclimatise and relax. Depending on duration of storage and ambient temperature, this process may take up to 24 hours. A heat gun can be used to aid relaxation of matting. When handling the rolls or large panels of matting at any time during the installation, avoid dragging or rough handling that may cause stretching or distortion.

Tools Required: Aluminum sections (5 types, supplied as required); screws, screw anchors and shears for trimming mat; a powered drill with size 5.5mm masonry drill bit, hacksaw, utility knife and straight edge; a hot air gun may facilitate installation in cold ambient temperatures.

Cut matting using a utility knife and a straight edge. In cold ambient temperatures warm matting with hot air gun to facilitate cutting. NOTE: Due to the elastic nature of the product, it is important to avoid rough handling during installation.

For more information on how to install Frontrunner Plus in your space, contact your Portico Systems sales representative.

#### YOUR AUTHORIZED SALES REPRESENTATIVE:



experience it for yourself

Talk with your sales representative or request samples at [samples@porticosystems.com](mailto:samples@porticosystems.com)

Grid Matting

Frontrunner Plus